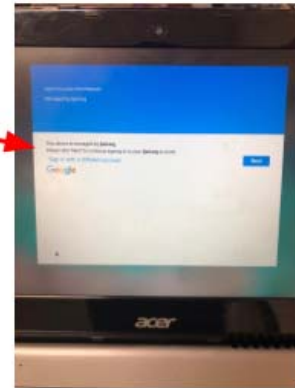
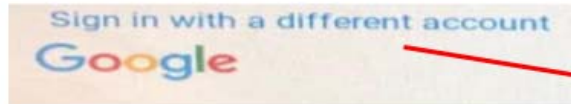


Logging Into Chromebooks from Home Without a Student Badge

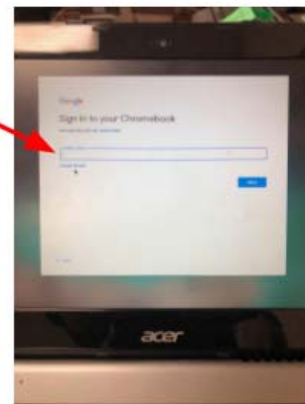
1. Click on



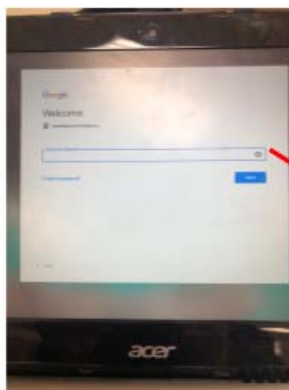
2. Enter your students Google Email into the box.



For example:
John.Doe@ljsd.us



3. Enter your students Password



**Passwords are school codes:
(ep) (jo) (ma) (mg) (ol) depending on
your school site + student number (you
student's lunch number)

For example:
ep111222