

Lowell Joint School District

*Mid-Year Benchmark
Testing Report*

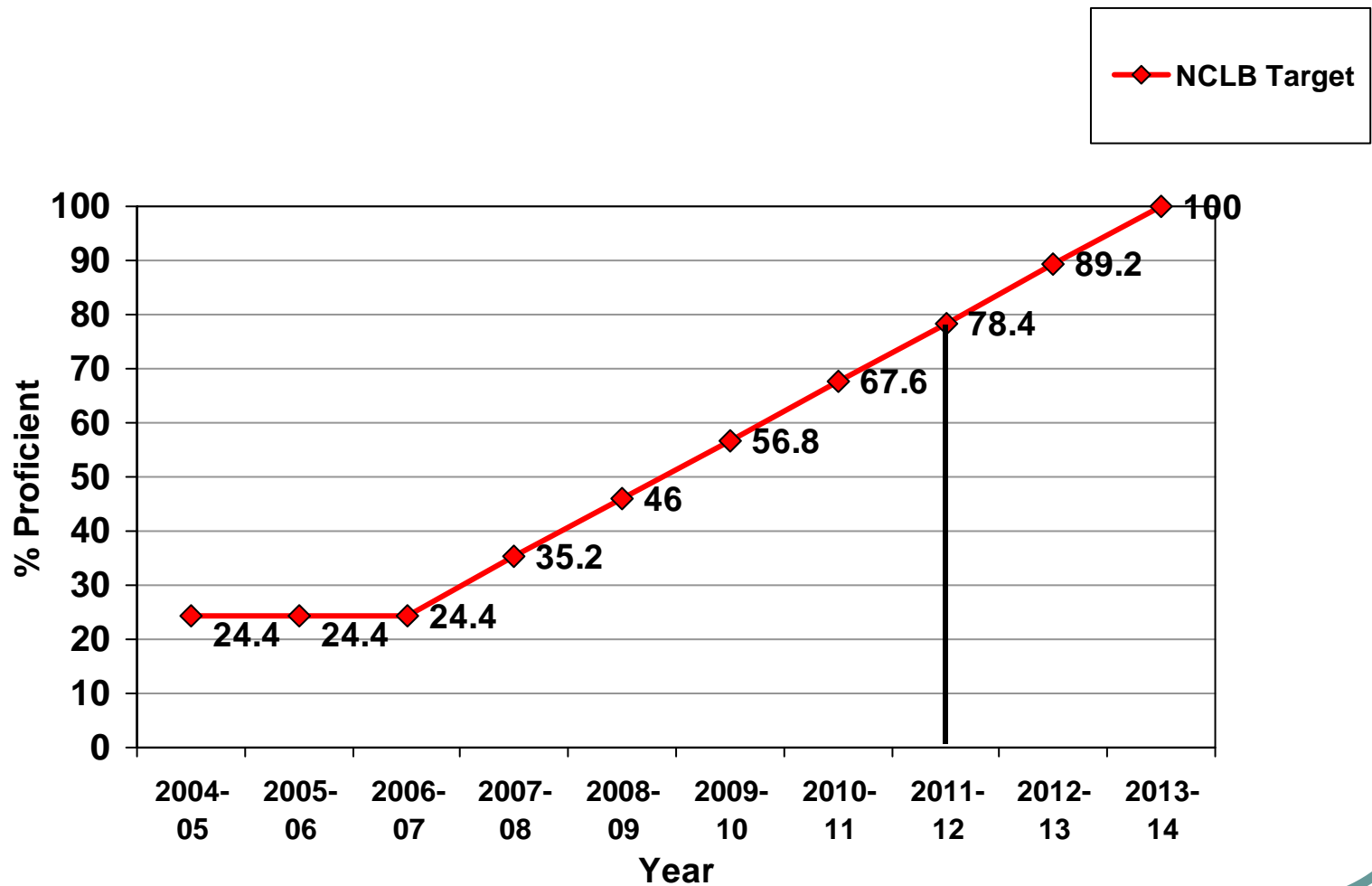
**Presented to the
Board of Trustees
March 5, 2012**



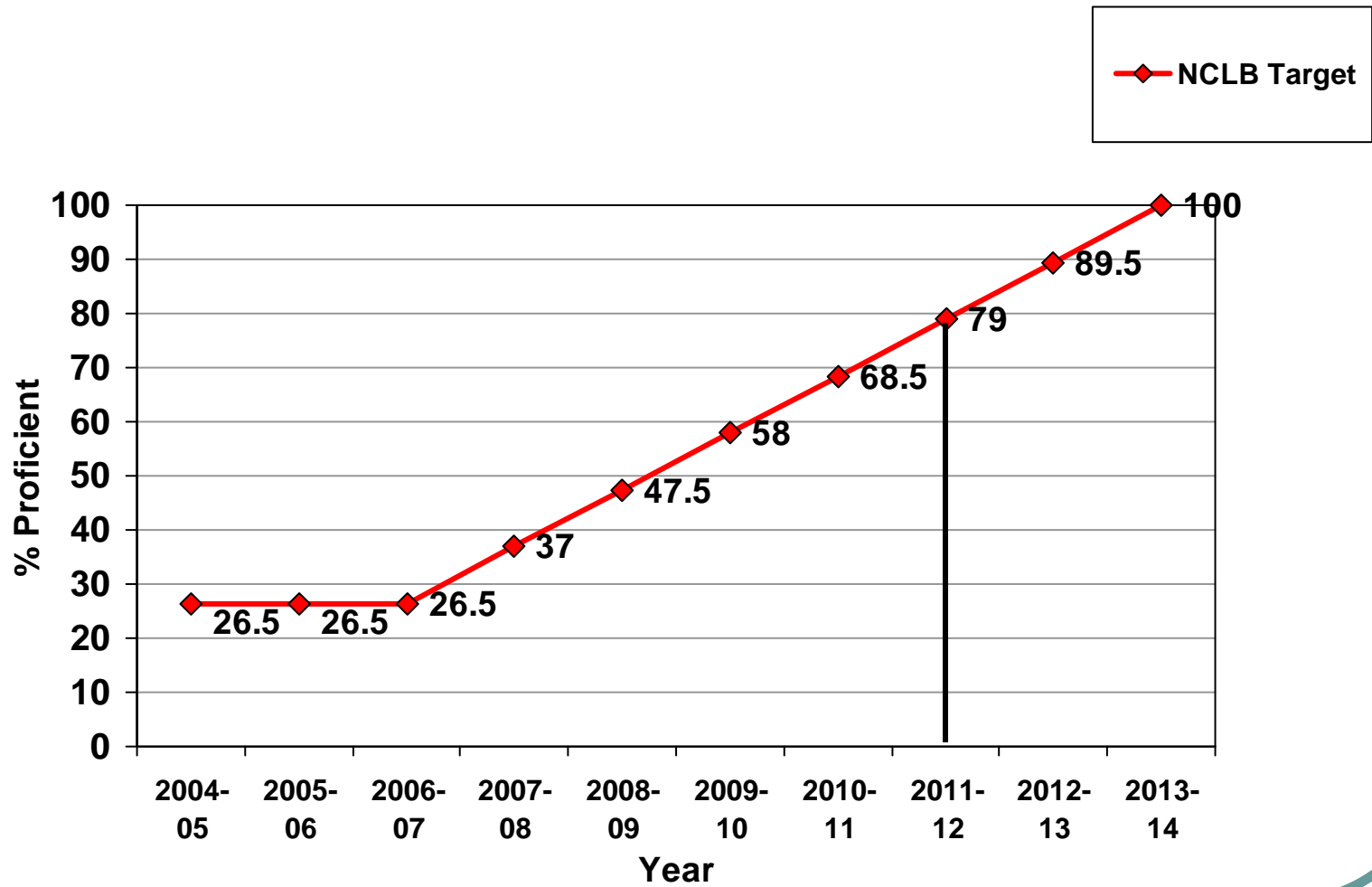
Mid-Year Benchmark Tests

- District Mid-Year Benchmark Tests are designed to align with the California Standards Test (CST).
- A score of 75% is considered “proficient” or “on grade level.”
- Students scoring at or below 50% are identified as “at risk of retention.”
- Teachers develop an intervention plan for students at risk of retention.

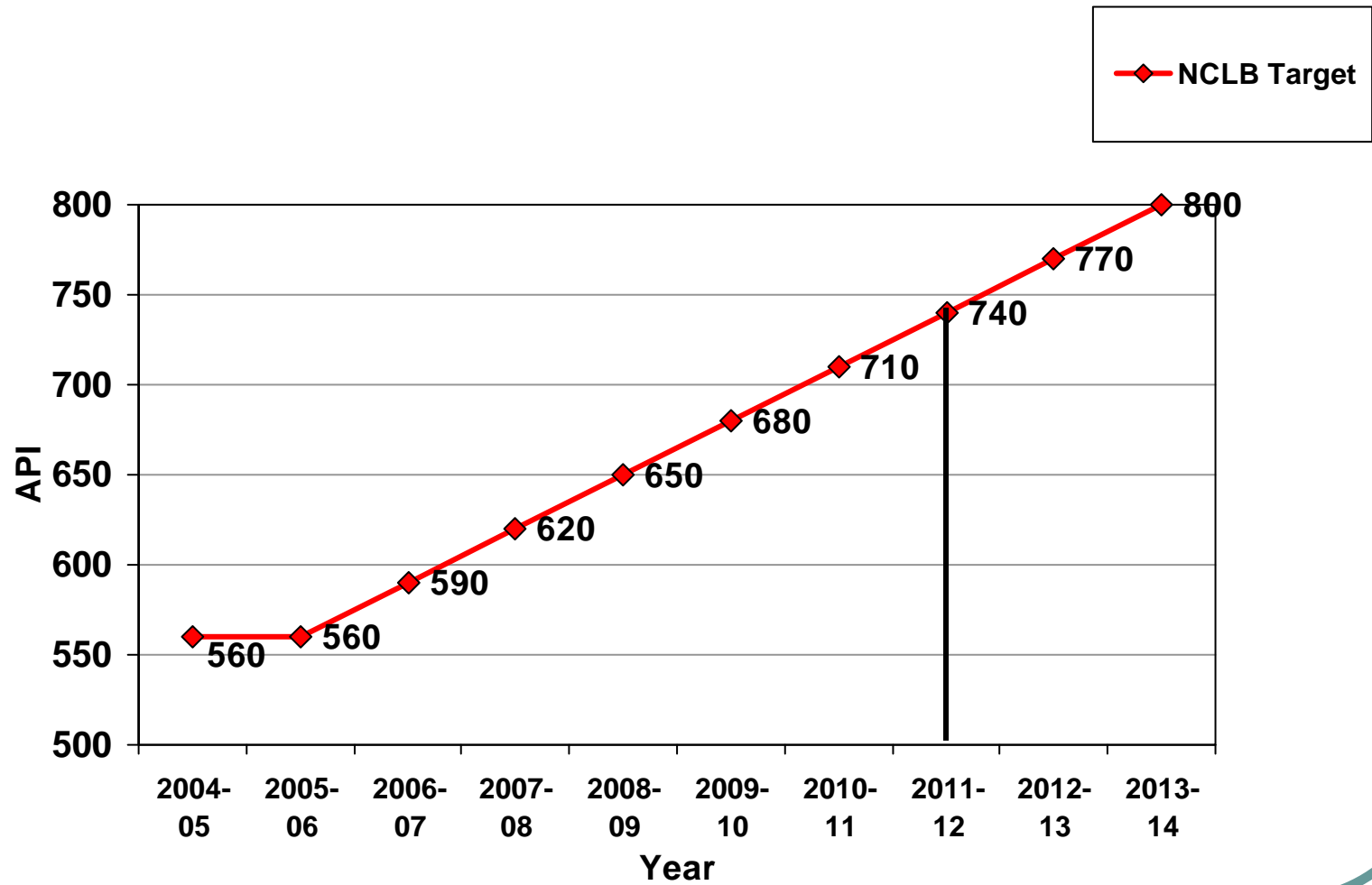
NCLB AYP Targets for ELA



NCLB AYP Targets for Math

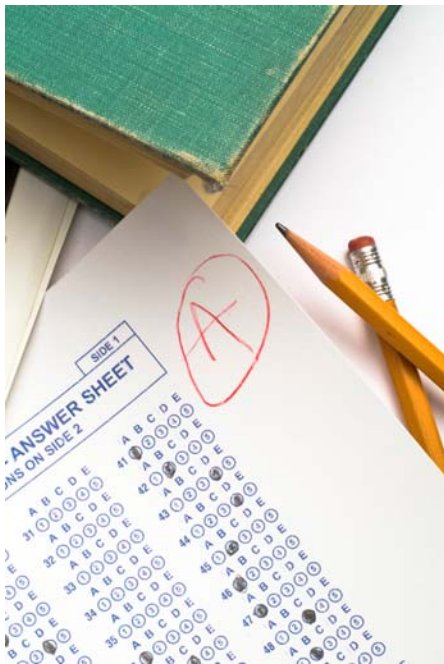


NCLB Additional Indicator



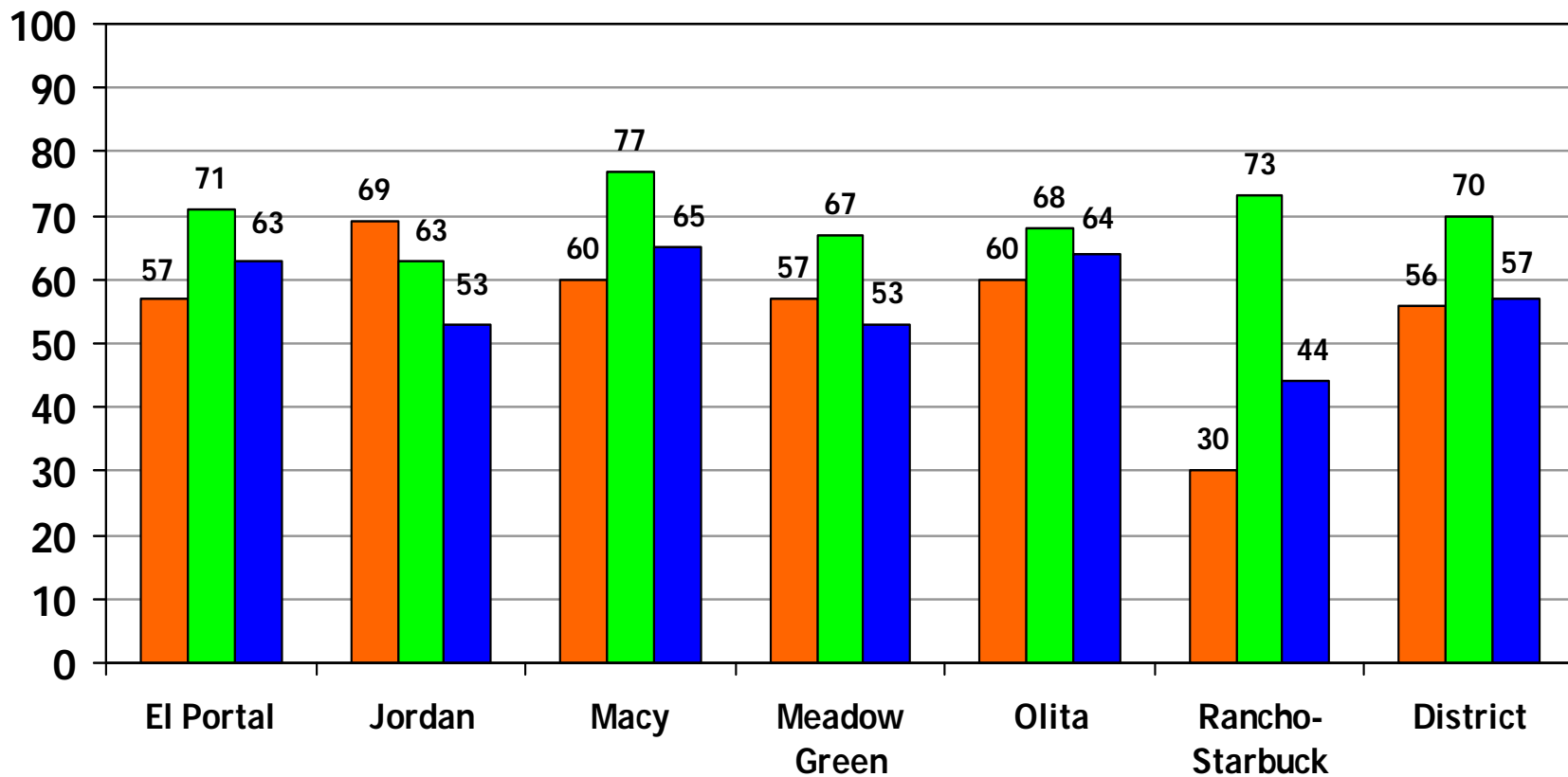
Percentage of Students Scoring At or Above Proficient

By School and By Grade Level



Lowell Joint School District

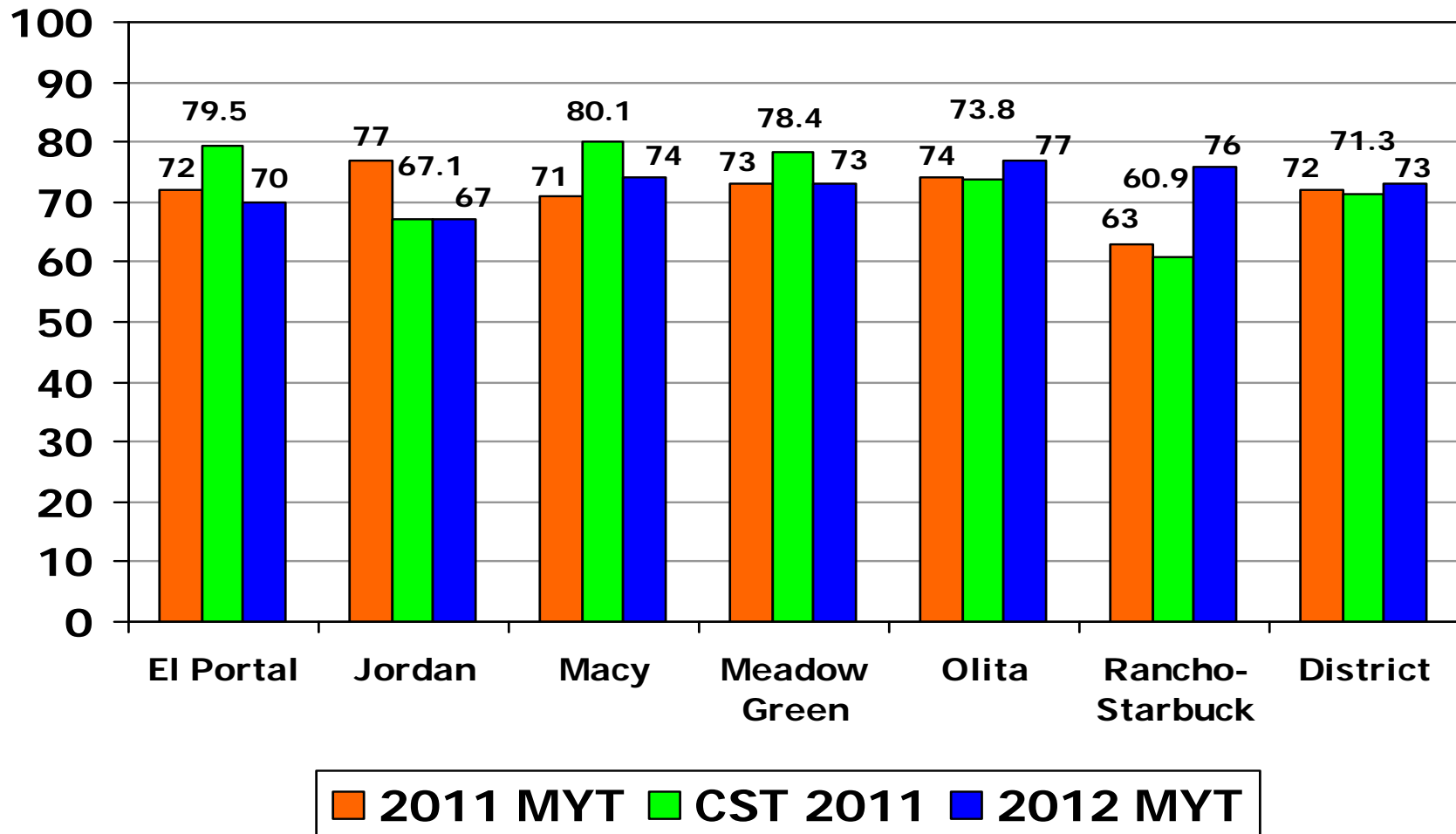
Percentage of Students Scoring At or Above Proficient (75%) in English-Language Arts



2011 MYT 2011 CST 2012 MYT

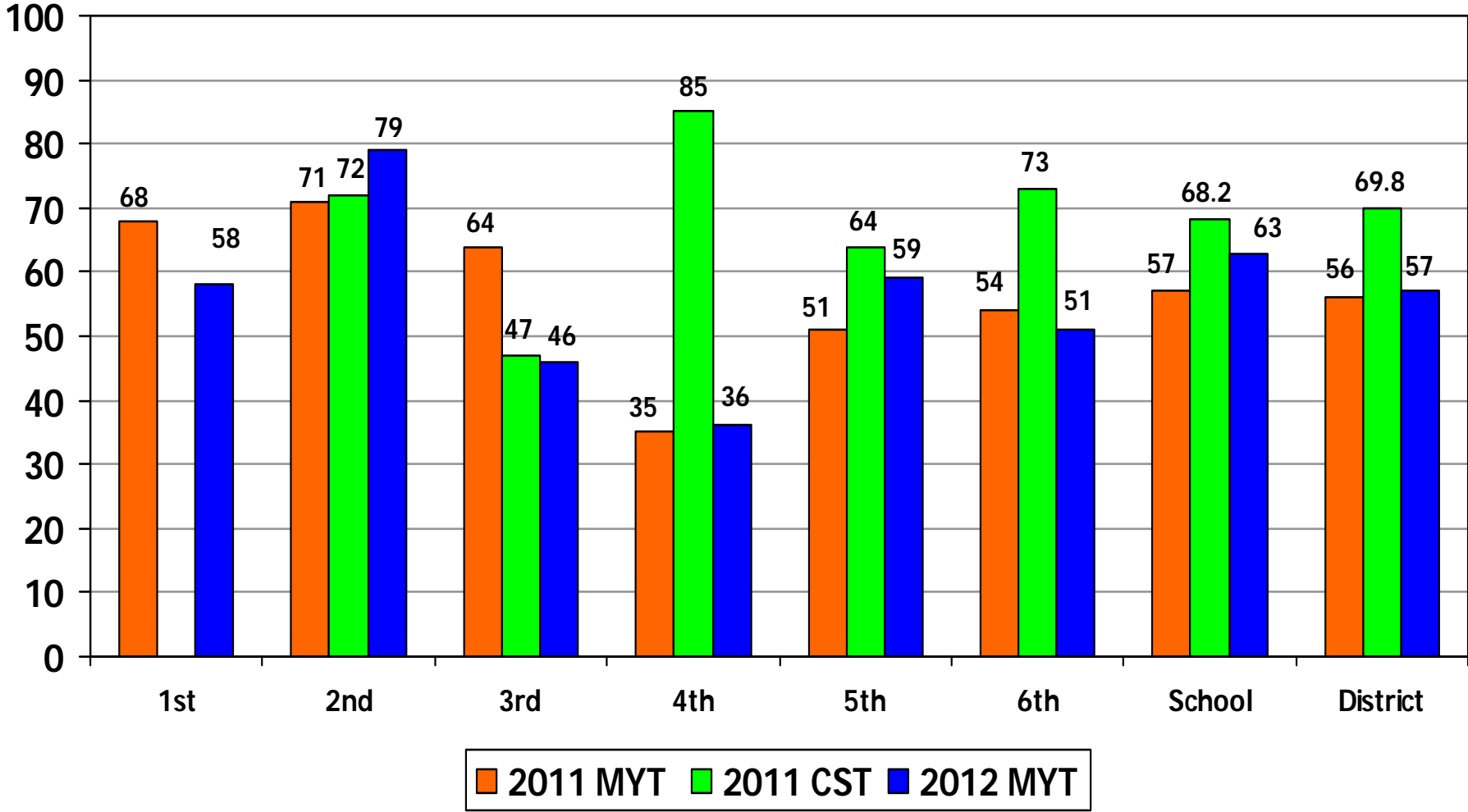
Lowell Joint School District

Percentage of Students Scoring At or Above Proficient (75%) in Mathematics



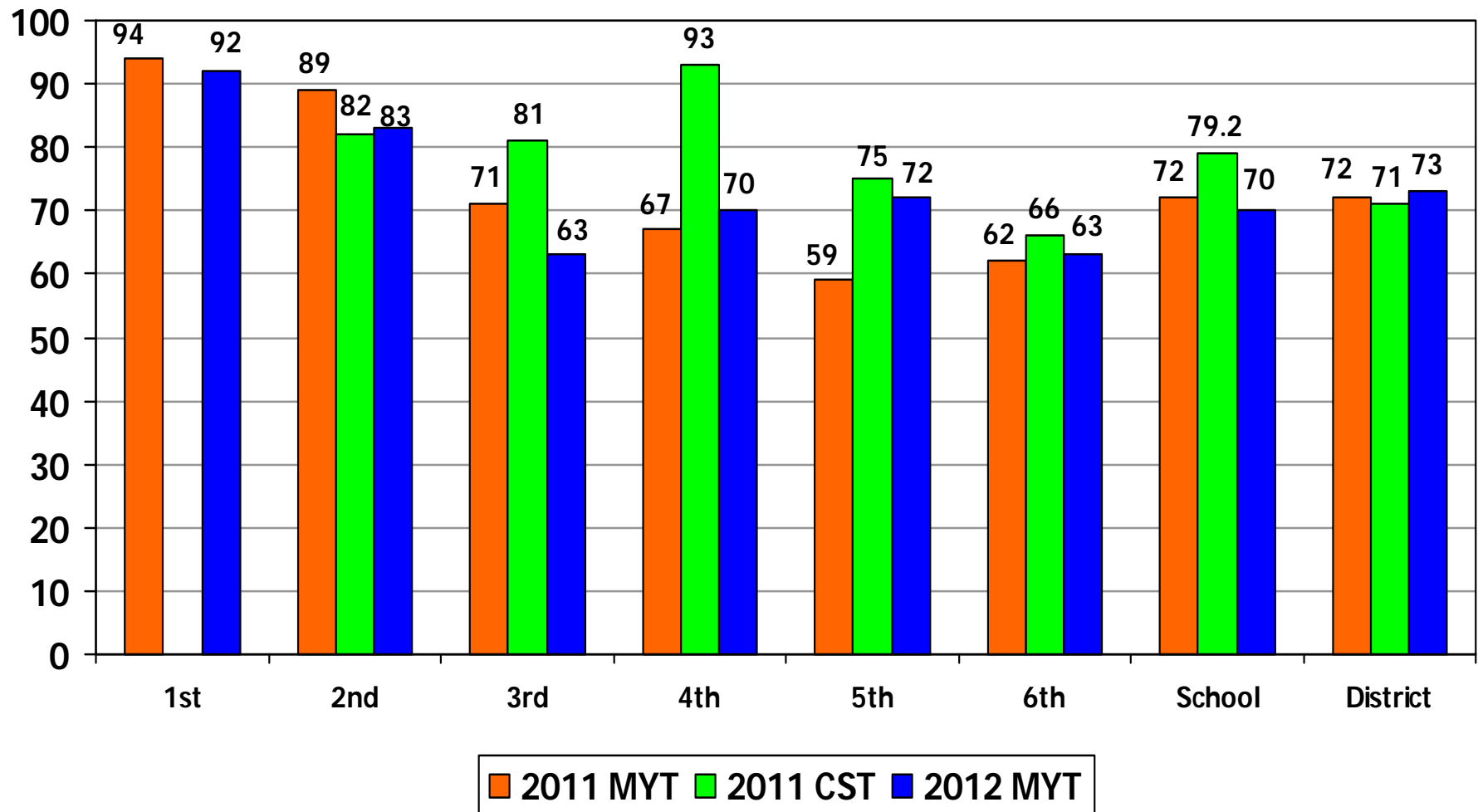
El Portal – English-Language Arts

Percentage of Students Scoring
At or Above Proficient



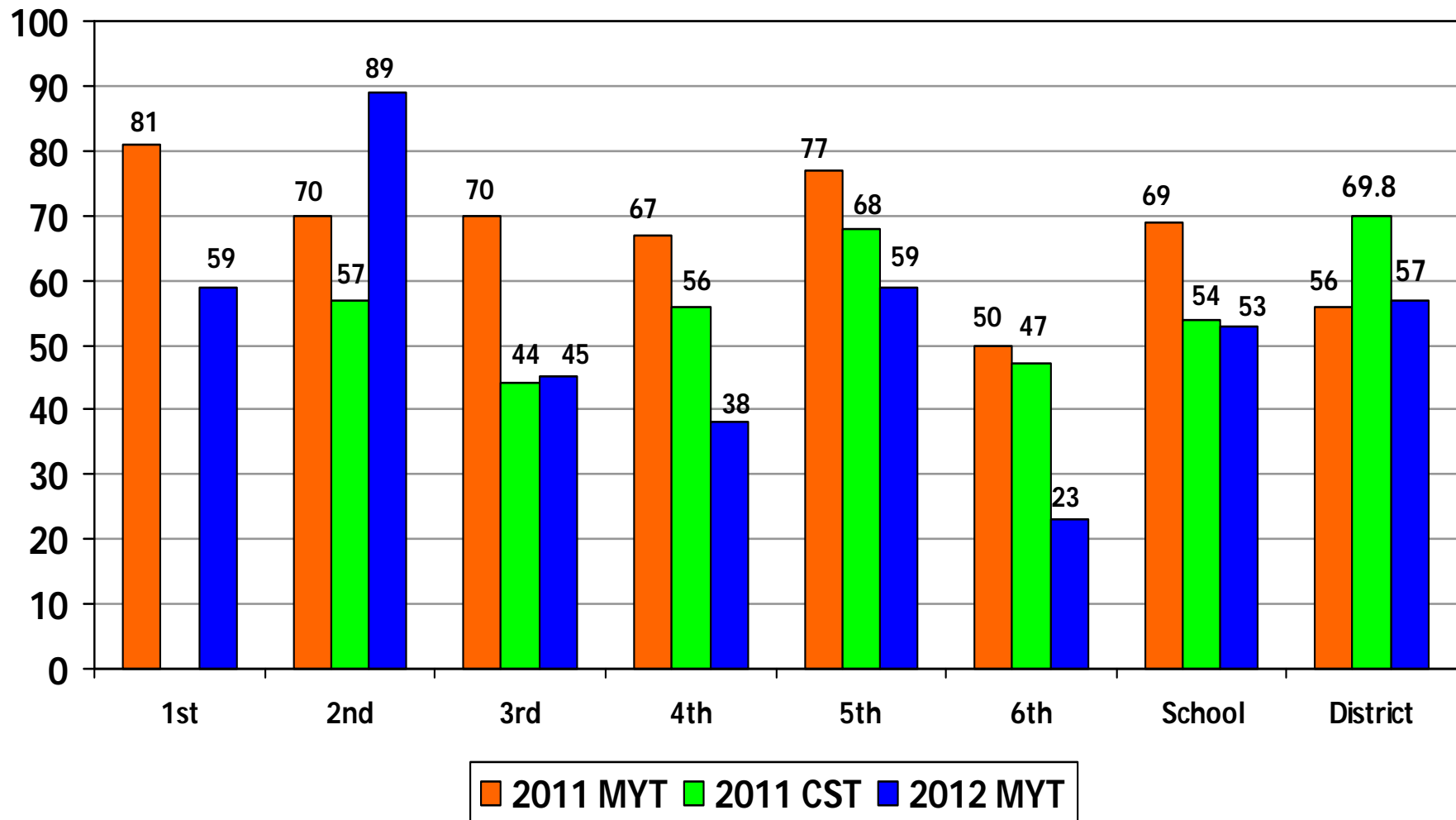
El Portal – Mathematics

Percentage of Students Scoring
At or Above Proficient



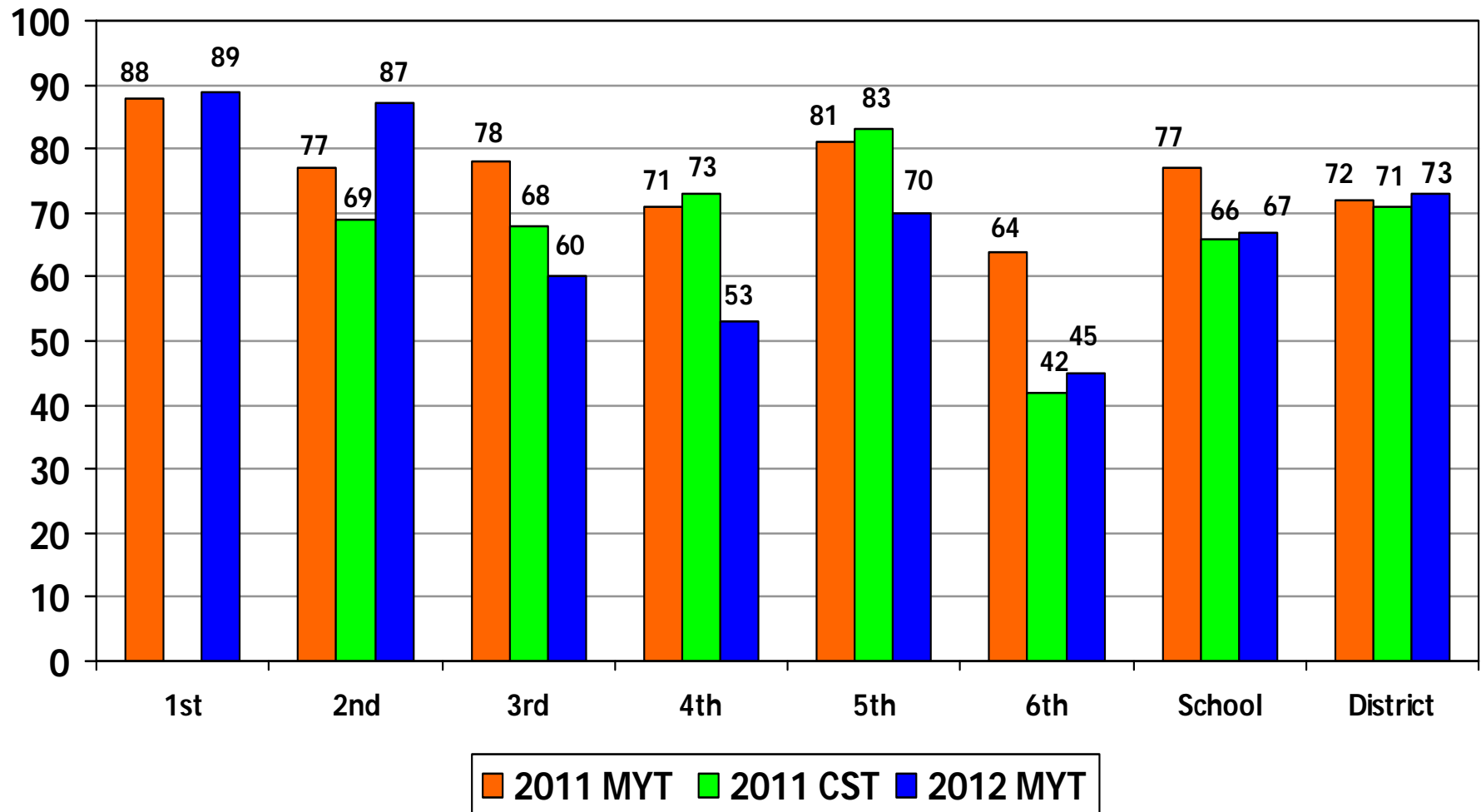
Jordan – English-Language Arts

Percentage of Students Scoring
At or Above Proficient



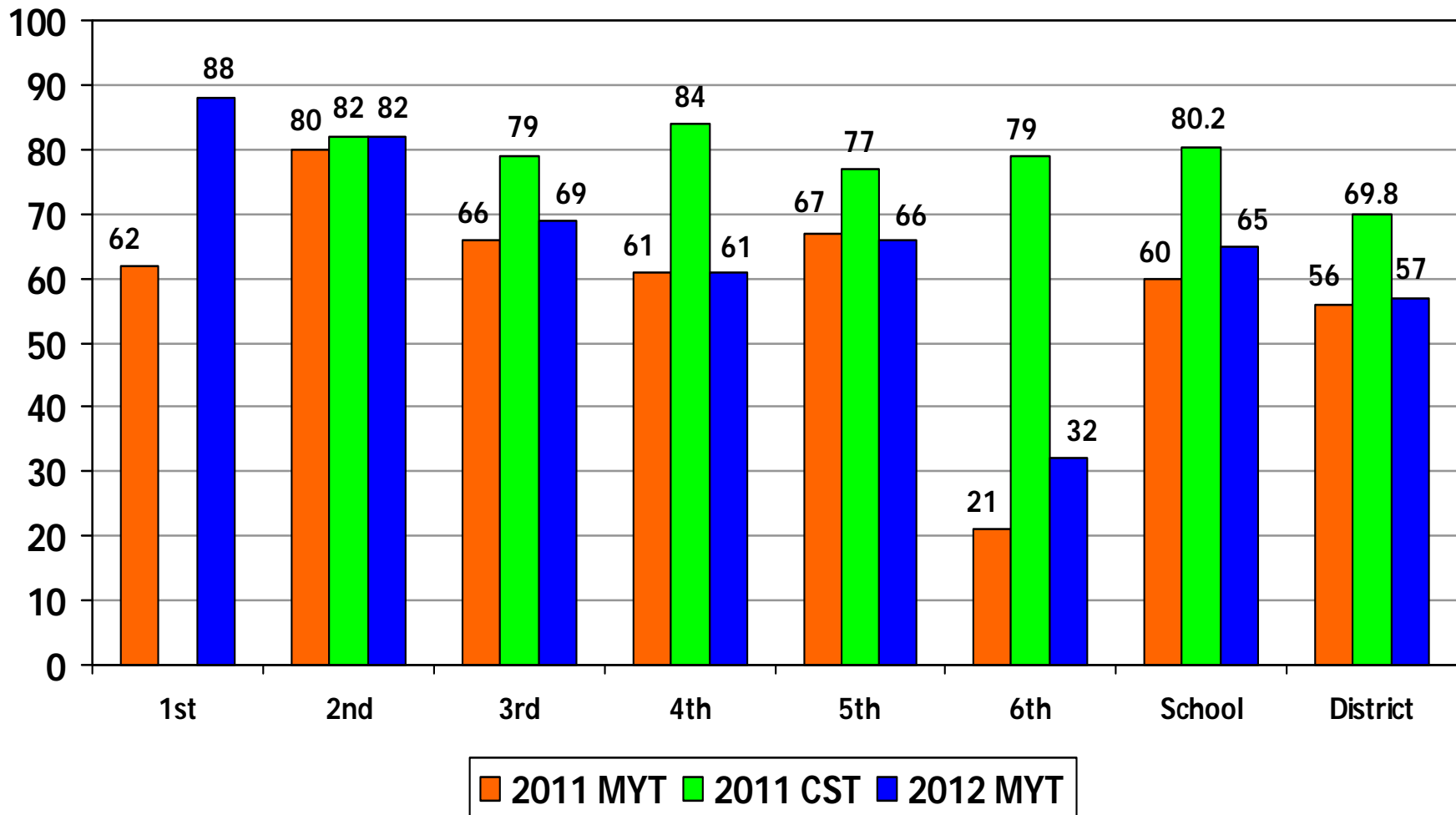
Jordan – Mathematics

Percentage of Students Scoring At or Above Proficient



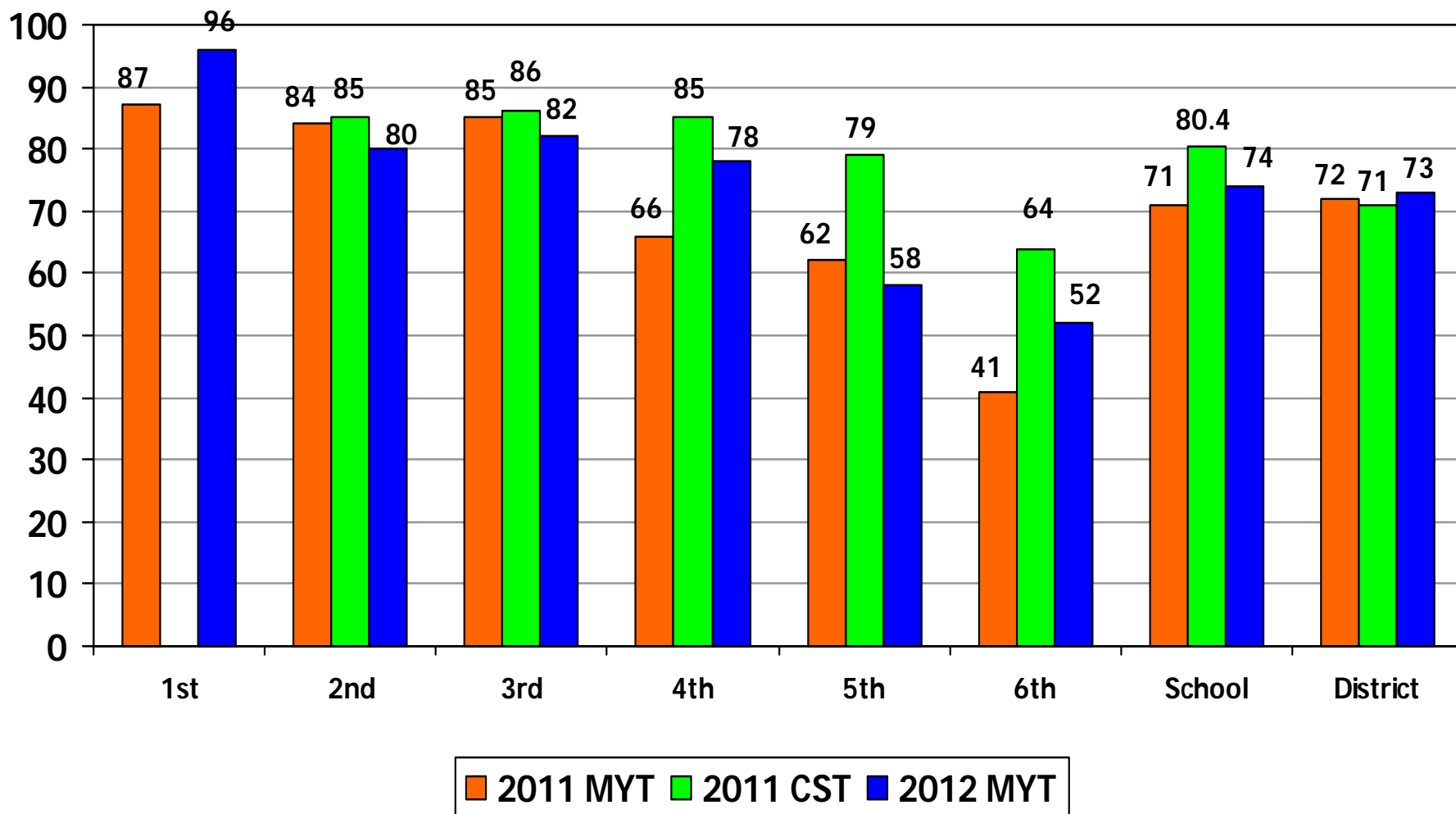
Macy – English-Language Arts

Percentage of Students Scoring
At or Above Proficient



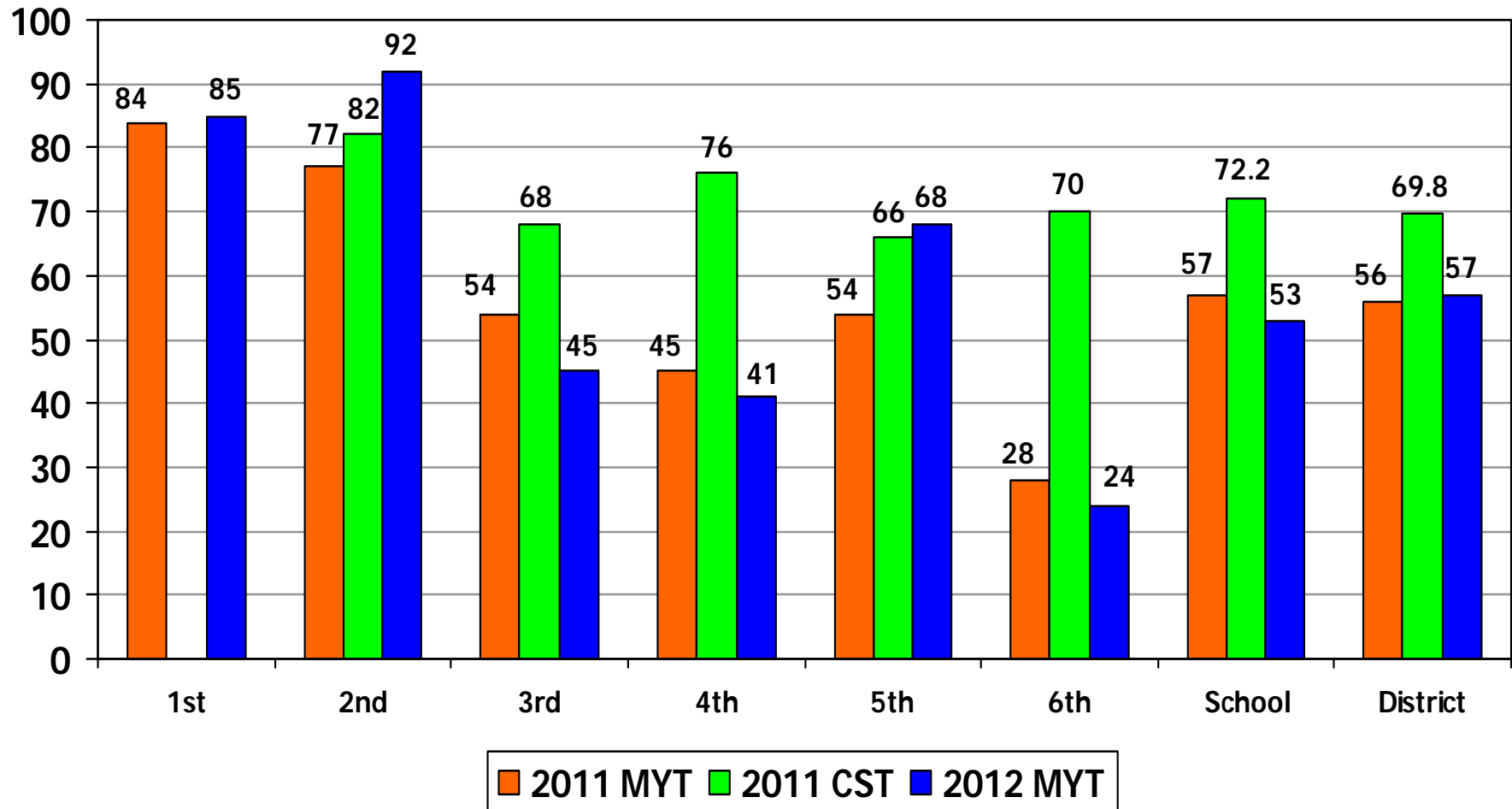
Macy – Mathematics

Percentage of Students Scoring
At or Above Proficient



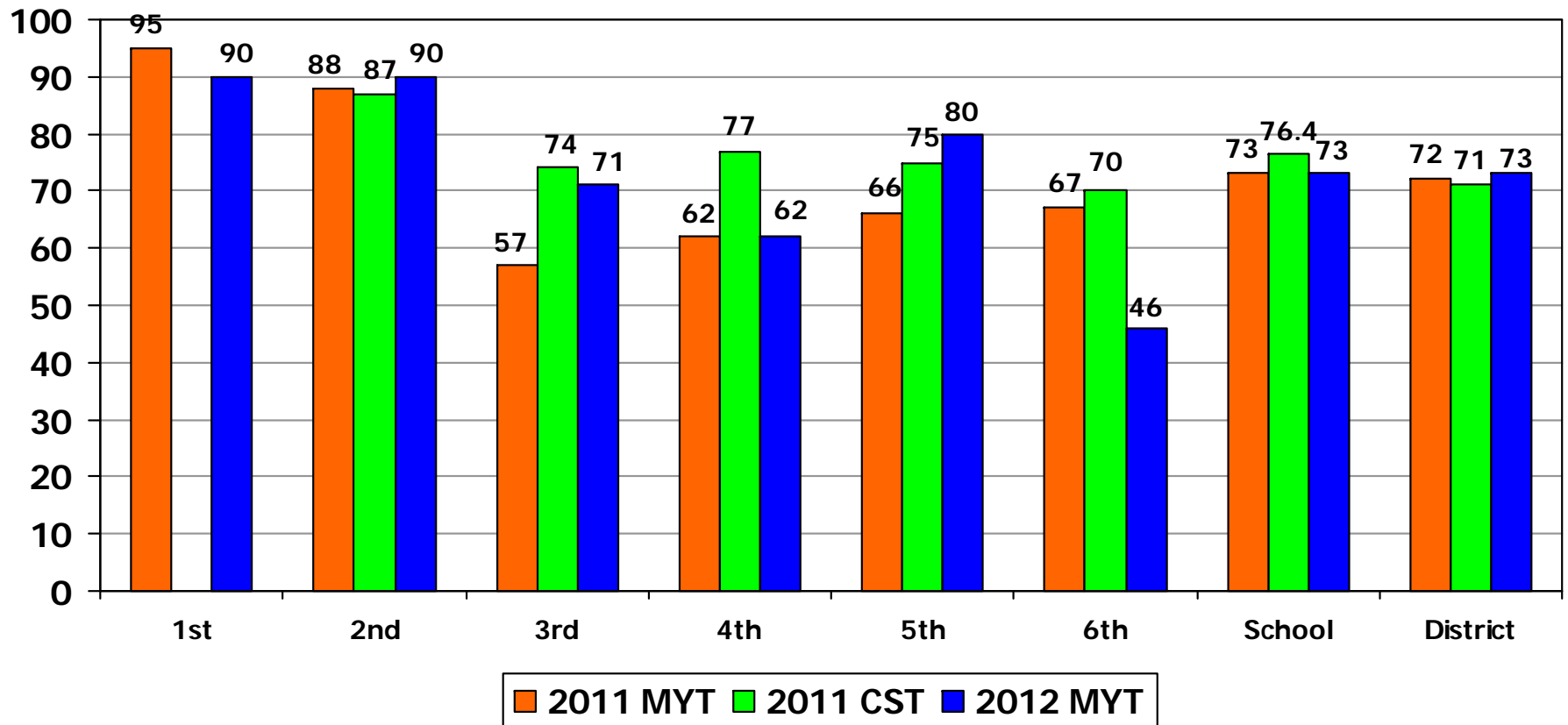
Meadow Green – English-Language Arts

Percentage of Students Scoring
At or Above Proficient



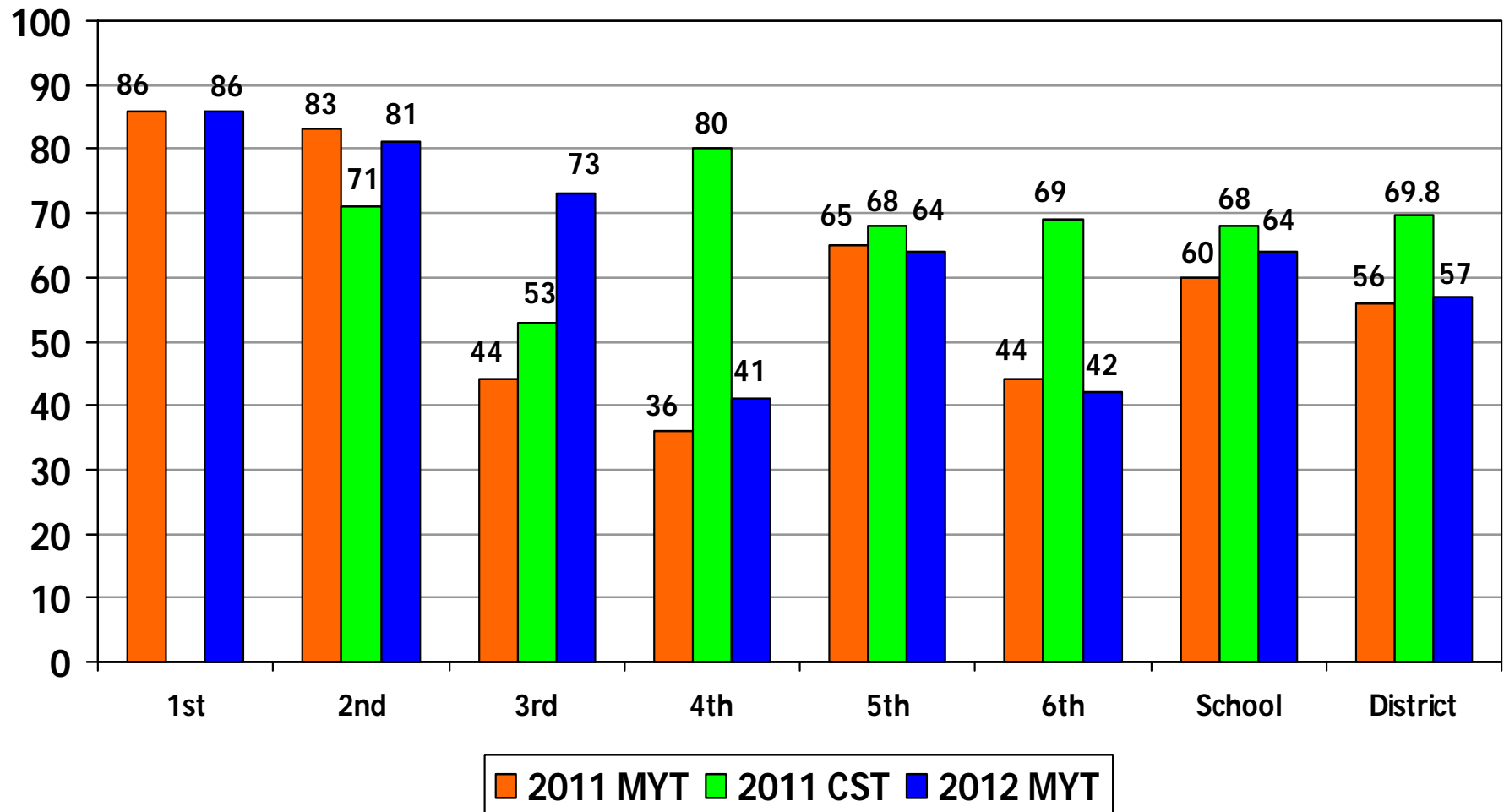
Meadow Green – Mathematics

Percentage of Students Scoring
At or Above Proficient



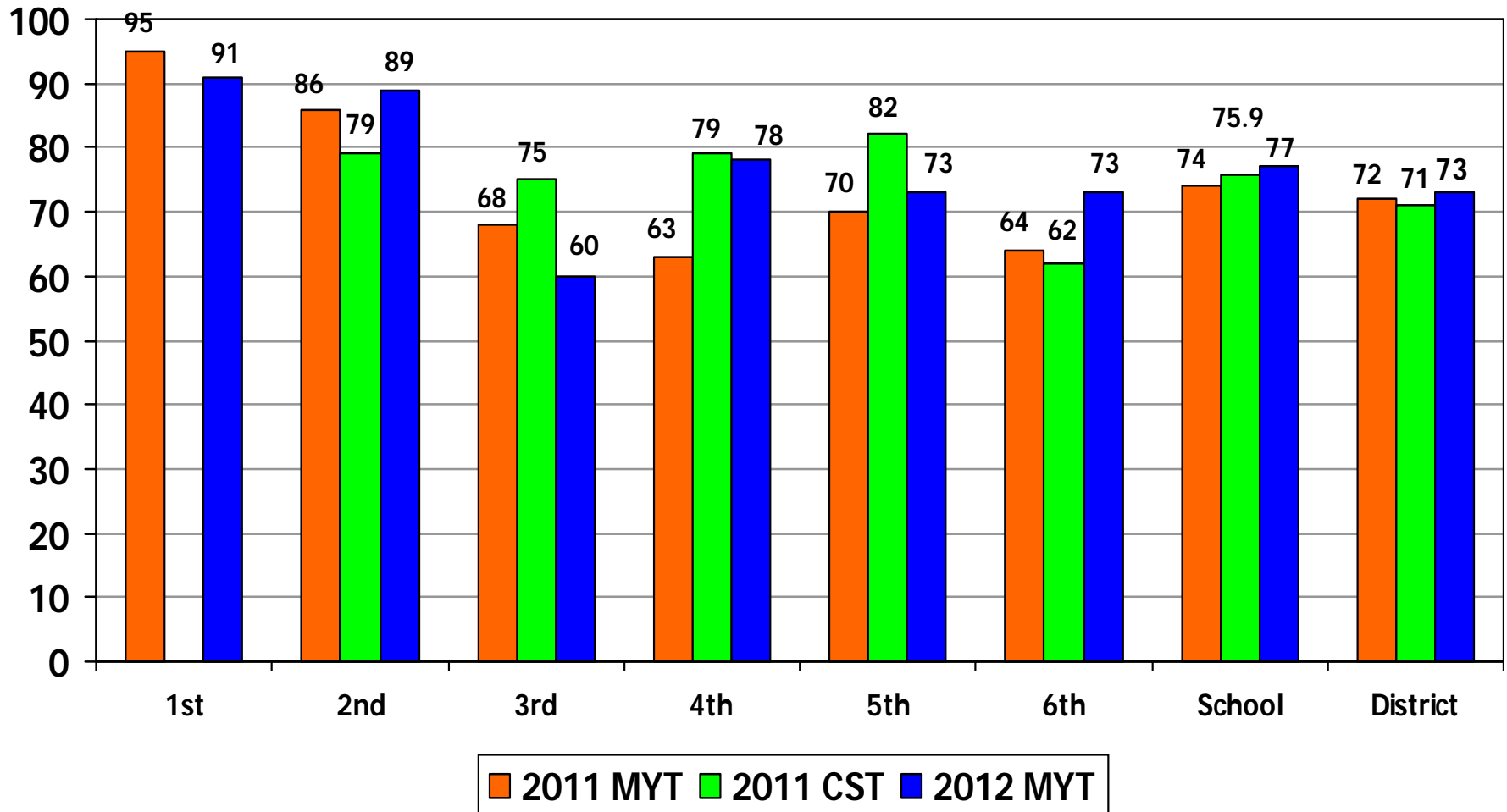
Olita – English-Language Arts

Percentage of Students Scoring
At or Above Proficient



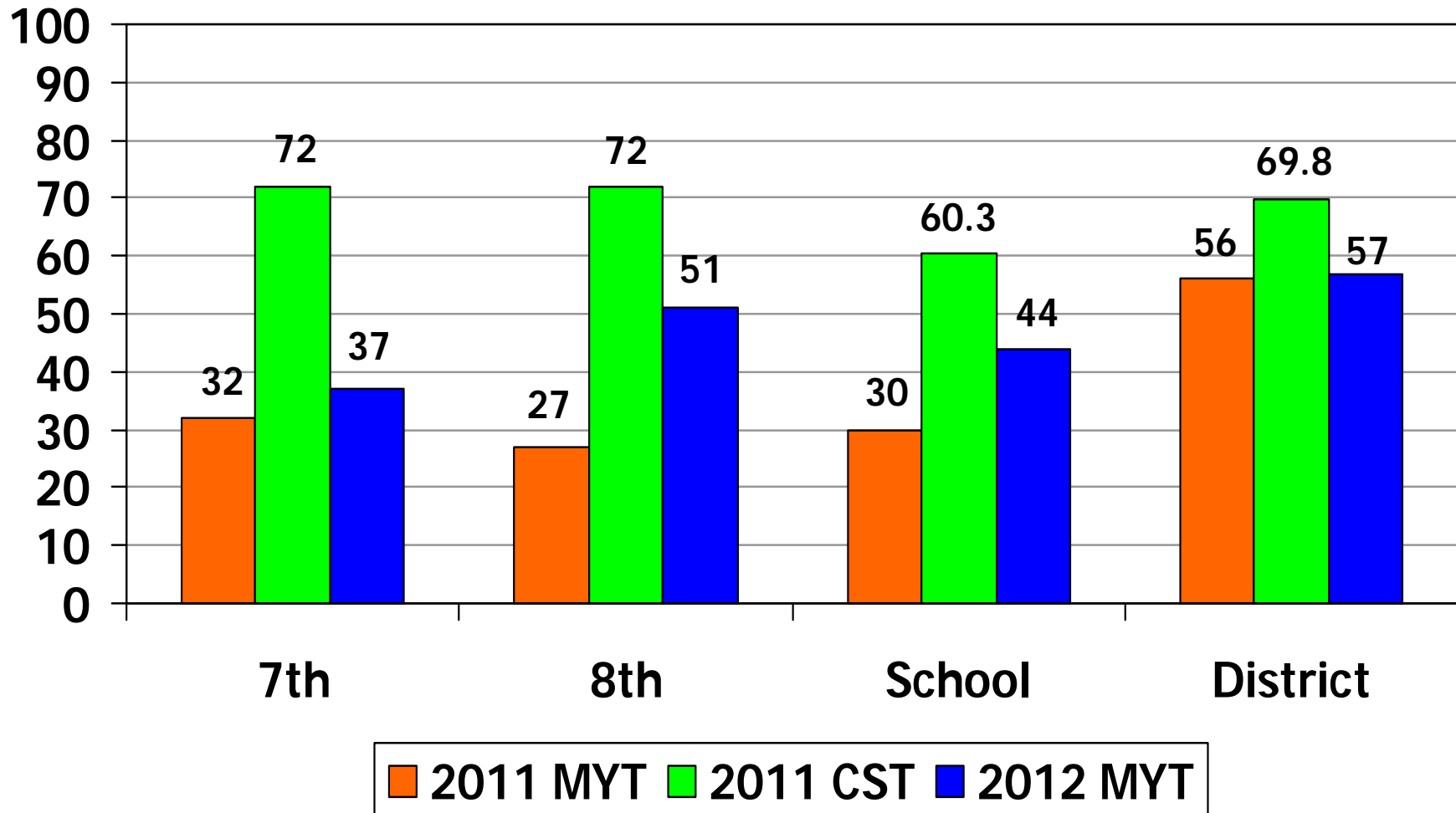
Olita – Mathematics

Percentage of Students Scoring
At or Above Proficient



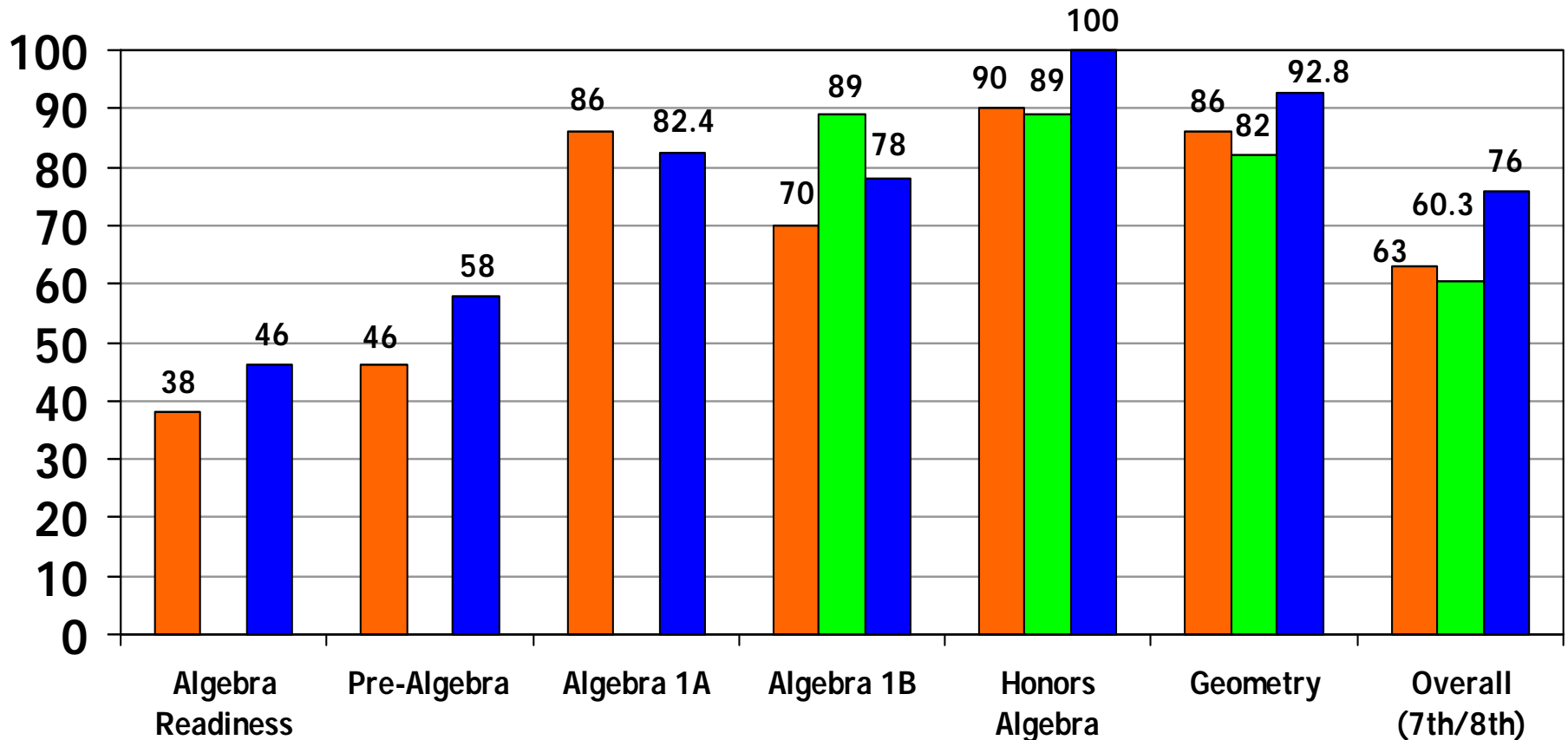
Rancho-Starbuck – English-Language Arts

Percentage of Students Scoring
At or Above Proficient



Rancho-Starbuck – Mathematics

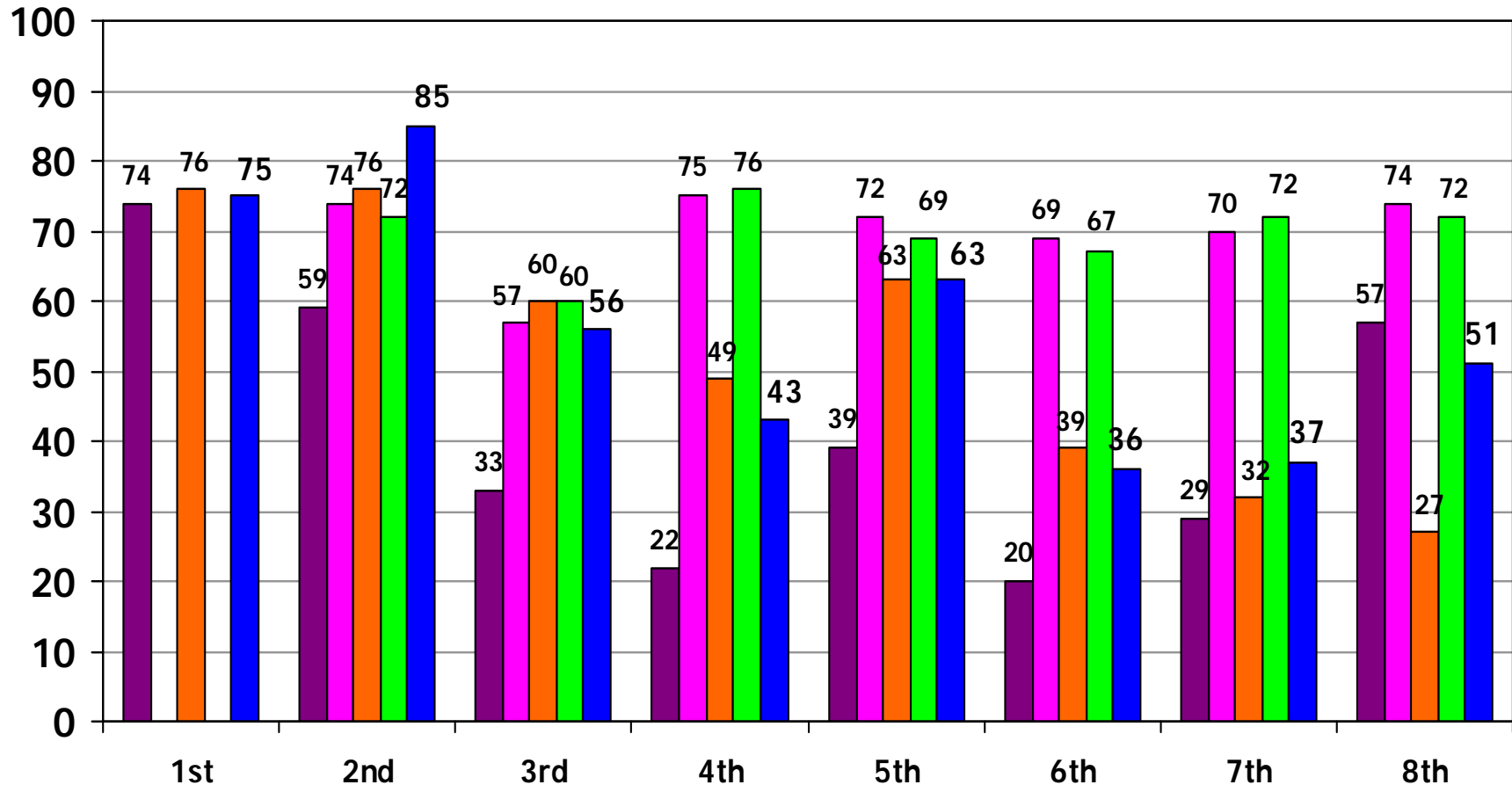
Percentage of Students Scoring
At or Above Proficient



2011 MYT 2011 CST 2011 MYT

District Results By Grade Level – English-Language Arts

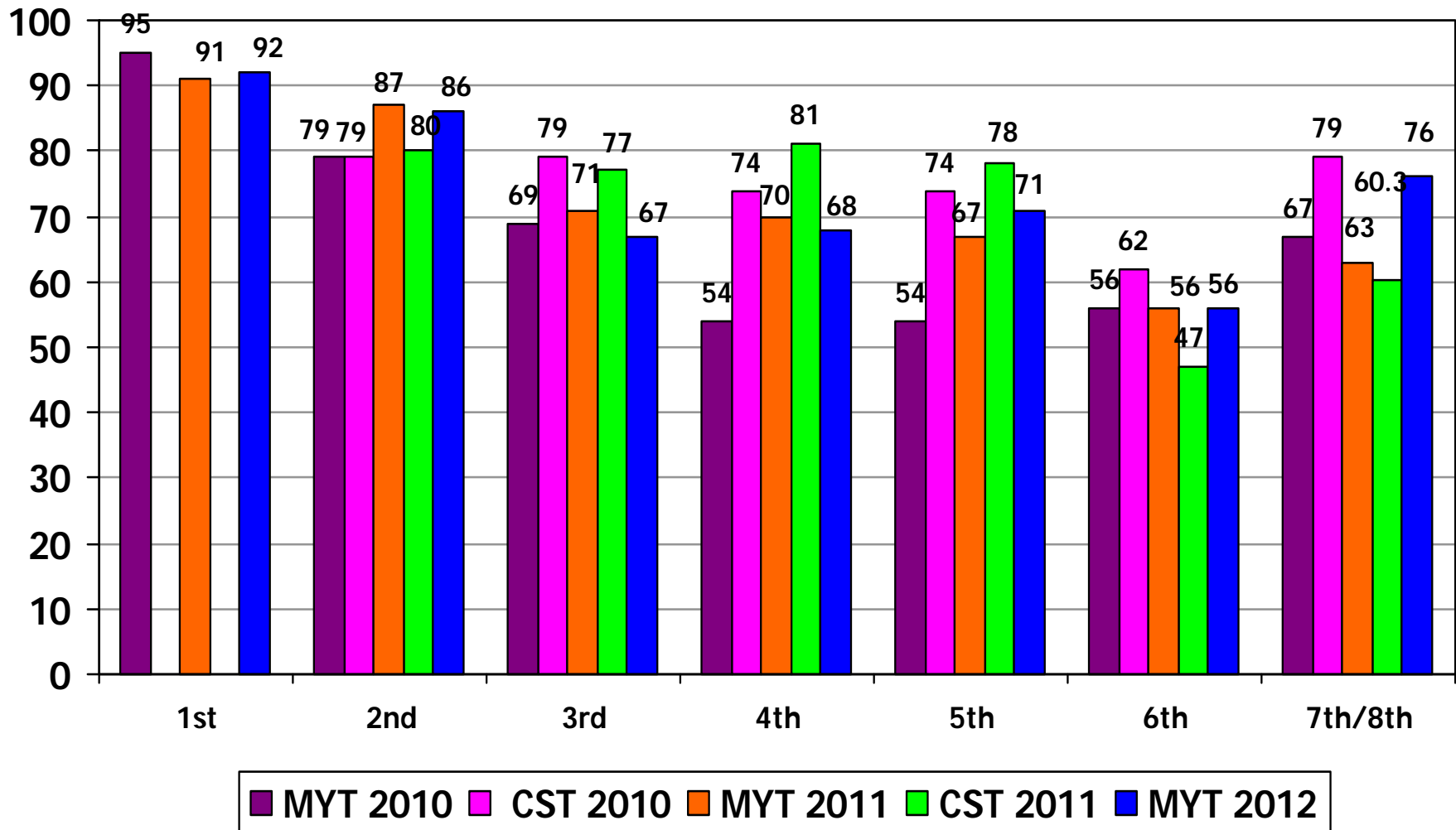
Percentage of Students Scoring At or Above Proficient



■ MYT 2010
 ■ CST 2010
 ■ MYT 2011
 ■ CST 2011
 ■ MYT 2012

District Results By Grade Level – Mathematics

Percentage of Students Scoring At or Above Proficient



Next Steps...



- Principals and grade-level teams analyze Mid-Year Benchmark Test results.
- Grade-level teams identify the standards where students were not proficient.
- Grade-level teams develop a plan to re-teach and intervene for content not yet mastered, while continuing to ensure new material is covered according to the pacing guides.
- Teachers continue instruction focused on attaining proficient results on the 2012 CST.

Questions?

