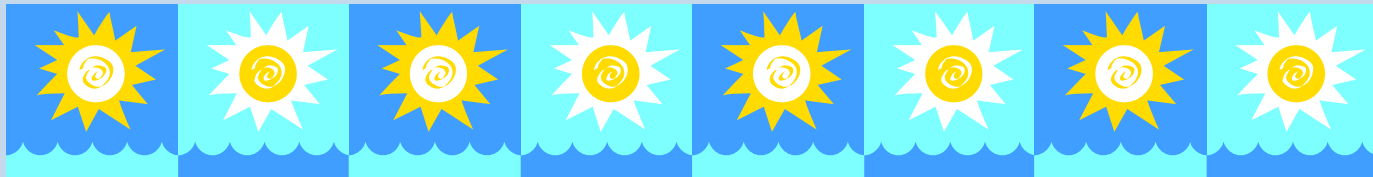


**2009**

**Summer Academic Programs  
SUMMARY REPORT**

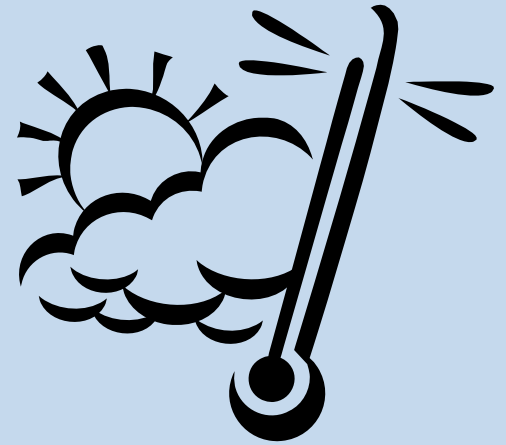


**Lowell Joint School District**

**September 14, 2009**

# Three Summer Programs

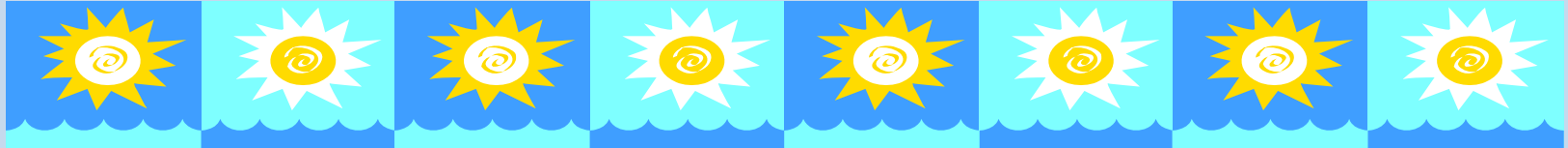
- **Extended School Year (ESY)**
  - Special Education Students
- **Summer FUNdamentals and Academic Intervention**
  - Incoming 7<sup>th</sup> and 8<sup>th</sup> Grade Students
- **Summer Academic Camp “The Deep Blue Sea”**
  - English Language Learners and At-Risk Students



# EXTENDED SCHOOL YEAR (ESY)



# Extended School Year (ESY)



Designed to maintain student mastery of critical skills and objectives represented in the IEP and achieved during the regular school year

# Extended School Year (ESY) School Sites

June 15 – July 10

- **Meadow Green Elementary School**
  - 2 Classes (Pre-School)
- **Macy Elementary School**
  - 4 Classes (K-6)
- **Rancho-Starbuck Junior High School**
  - 1 Class (7<sup>th</sup>-8<sup>th</sup>)



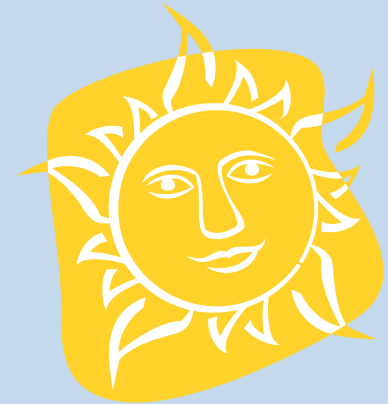
# Extended School Year (ESY) Teachers

- **Meadow Green Elementary School**

- Gail Crabtree
- Ronita Van Vliet

- **Macy Elementary School**

- Kerry Ospital
- Kelly Higgins
- Rosemary Hart
- Brooke Padilla



- **Rancho-Starbuck Junior High School**

- Barbara Arreguin

- **Speech and Language Specialist**

- Shelley Marker

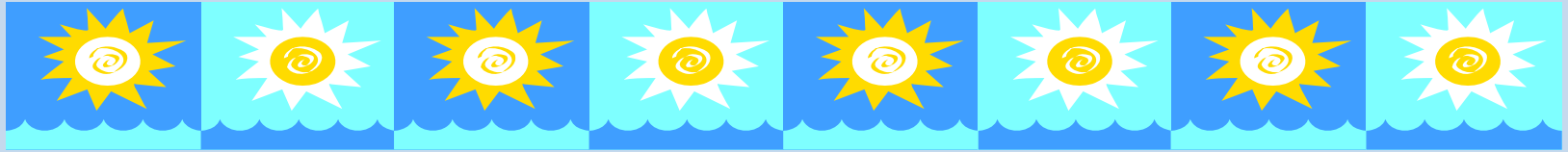
# Extended School Year (ESY) Summary

- 78 students served



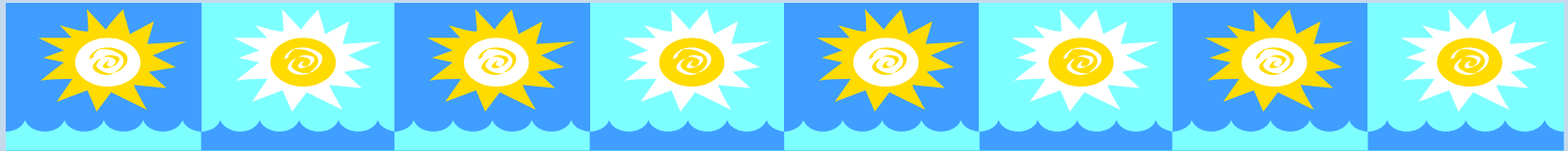
- 61 students received Speech and Language services

# Summer FUNdamentals



**Designed for incoming 7<sup>th</sup> grade students needing additional assistance in English Language Arts and/or Mathematics**

# Academic Intervention



**Designed for incoming 8<sup>th</sup>  
graders in need of “making up”  
classes from their 7<sup>th</sup> grade  
school year**

# Summer FUNdamentals & Academic Intervention

- Both programs offered at Rancho-Starbuck Junior High School
- Session:
  - June 15 – July 9
- Students Served:
  - 180 Students



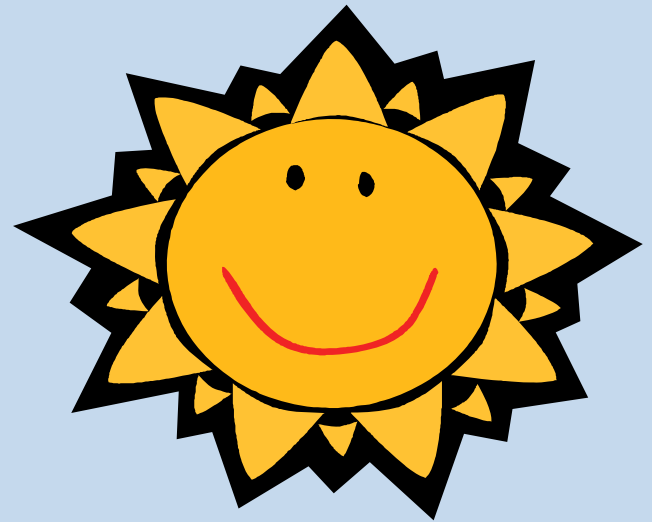
# Summer FUNdamentals Teachers

Sylvia Behura

Patty Jacobsen

Elaine Olmsted

Rita Roshan



# Academic Intervention Teachers

Lori Miller

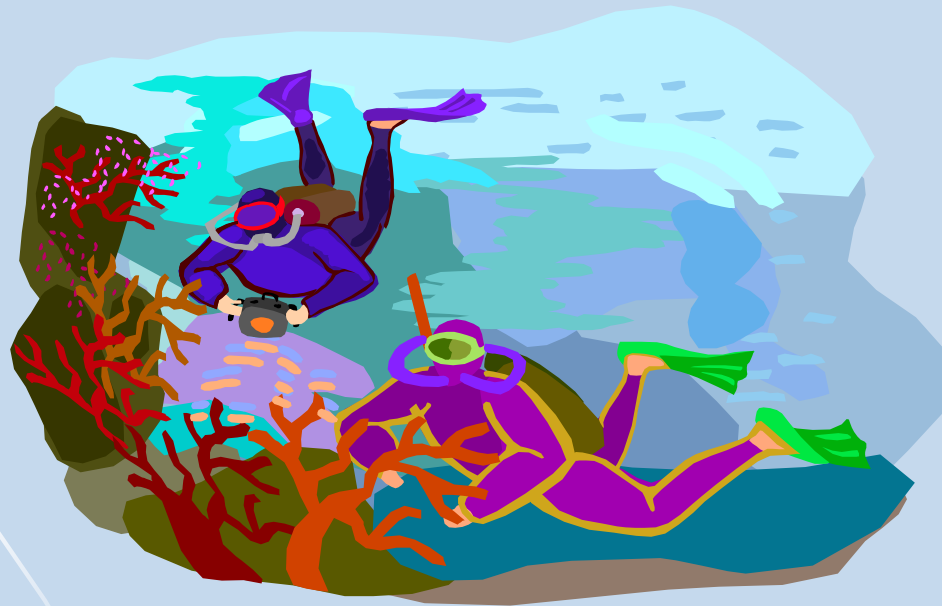
Allison Fonti

Lynn Garand

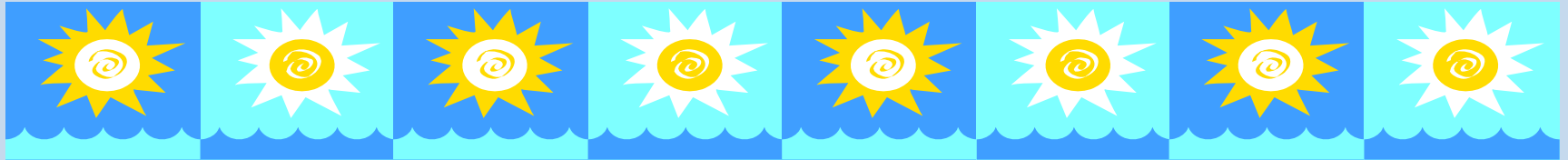
Melanie Artz



# **“The Deep Blue Sea” Summer Academic Camp**



# Summer Academic Camp



**Designed to provide English Language Learners and at-risk students additional learning opportunities to:**

- increase achievement**
- develop a continued interest in learning and a feeling of self-worth and responsibility**
- increase their skill level while decreasing the amount of time they are away from formal academic instruction**

# Summer Academic Camp School Sites

- **El Portal Elementary School**
  - 2 Classes (2<sup>nd</sup> – 3<sup>rd</sup> and 4<sup>th</sup> – 6<sup>th</sup> grades)
- **Jordan Elementary School**
  - 2 Classes (2<sup>nd</sup> – 3<sup>rd</sup> and 4<sup>th</sup> – 6<sup>th</sup> grades)
- **Meadow Green Elementary School**
  - 2 Classes (2<sup>nd</sup> – 3<sup>rd</sup> and 4<sup>th</sup> – 6<sup>th</sup> grades)
- **Rancho-Starbuck Junior High School**
  - 1 Class (7<sup>th</sup> & 8<sup>th</sup> grades)

# Summer Academic Camp Teachers

- **Camp Coordinator -  
Bonnie Tyner**

- **E.L.D. Curriculum  
Consultant - Carol Shaw**



- **El Portal Elementary**

- Marci Fuscardo
- Julie Mayhew

- **Jordan Elementary School**

- Allison Fonti
- Marikate Wissman

- **Meadow Green Elementary  
School**

- Leslie Mangold
- Yolanda Diaz

- **Rancho-Starbuck Junior  
High School**

- Catherine Milward

# Summer Academic Camp Focus

- Vocabulary Development
- Comprehension
- Oral Language Fluency
- Basic Mathematics Skills
- Cooperative Learning Skills
- Ocean Habitats
  - Coral Reef
  - Deep Sea
  - Tide pools
  - Kelp Forest
- Ocean Animals
- Marine Environment/Conservation
- Painted Ocean Camp Shirts
- Various hands-on experiences to strengthen content knowledge

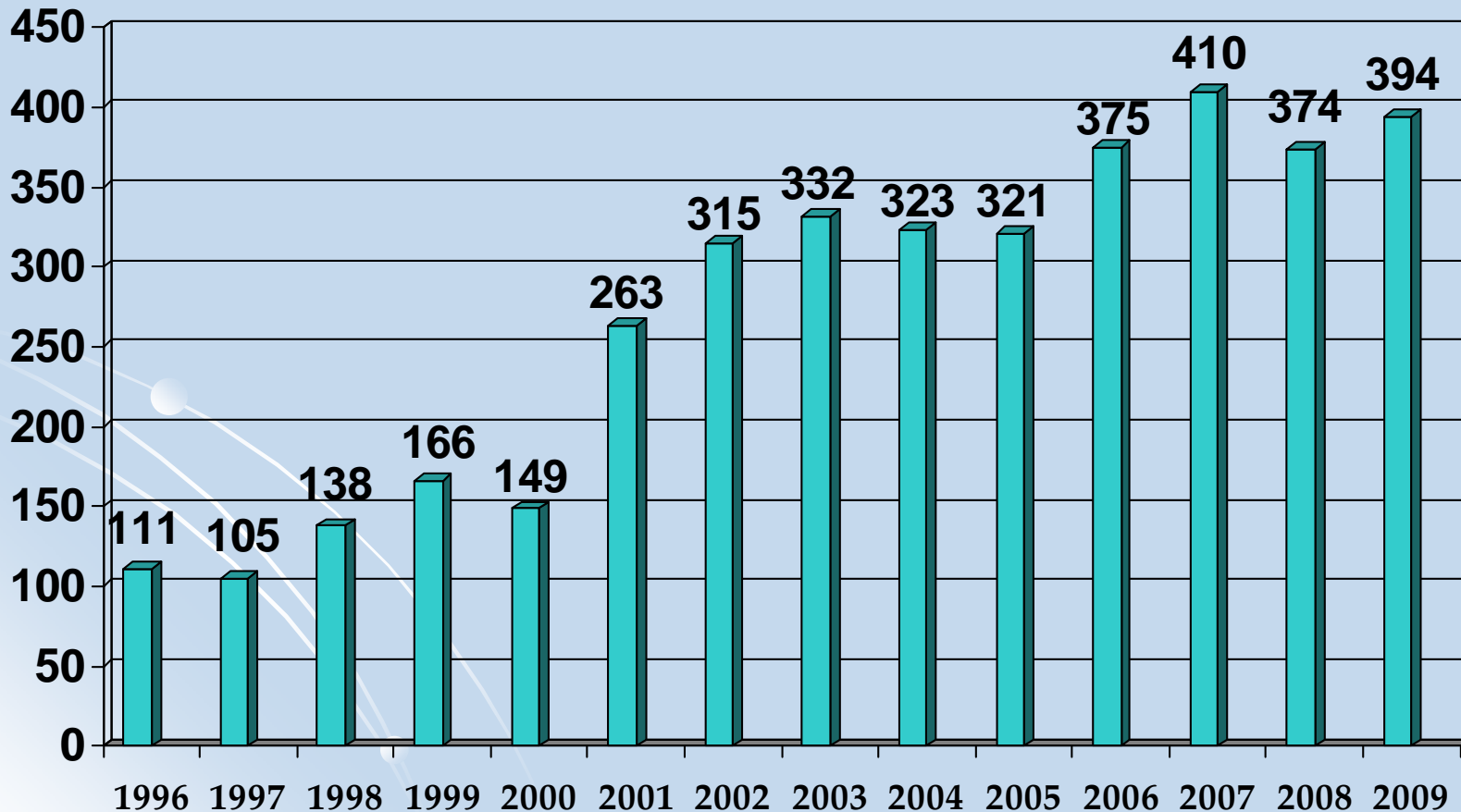


# Summer Academic Camp Summary



- **184 Students Served**
- **98 of the 184 students were English Learners, representing 25% of the District's English learner population**
- **Academic Camp provides a 'jump start' for annual CELDT testing of English learners**

# Number of English Learners Lowell Joint School District



# CELDT Testing

## California English Language Development Test

- Required annually to test all English Learners for English language proficiency
- Initial Identification for new students
- Annual assessment to measure English Learner student progress
- Provides one data point for reclassification to FEP

# **Bilingual Support Team-** **Provides support for the instruction** **and assessment of English Learners**

- **Martha Corona**
  - **Macy and Rancho-Starbuck**
- **Elsa Cueto**
  - **District Office**
- **Ivon Flores**
  - **Jordan**
- **Maria Elena Navarro**
  - **Meadow Green and Olita**
- **Mariana Ybarra**
  - **El Portal**

# With Sincere Appreciation to District Support Staff

- **Instructional Services Department**

- Renee Verbeck
- Holly Wolfe
- Elsa Cueto

- **Food Services**

- Rosa Orosemane and Staff
- Chelle Price

- **Maintenance Department**

- Shawn Gatewood and Staff

- **Superintendent's Office**

- Rosie Blankenship

- **Business Department**

- Selah Bautista
- Vicki Luna
- Jeanne Ann Richie

- **Board Room Bulletin Board**

- Bonnie Tyner

